

# Casco Bay Estuary Project

Fall 1998

## Fast Facts

Watershed is 985 square miles and includes 41 municipalities.

Only 3% of Maine's land mass, but 25% of state's population.

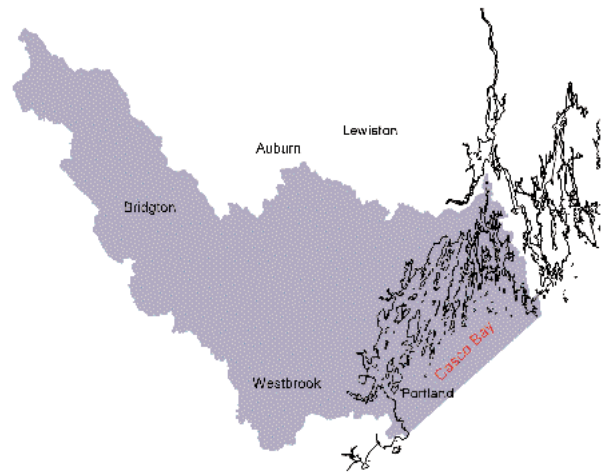
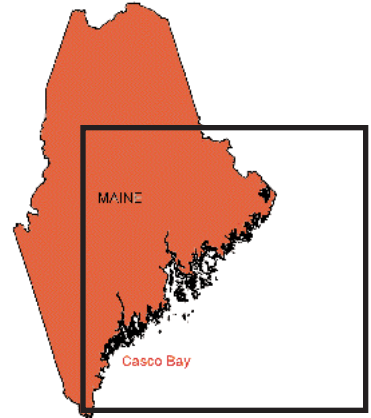
Tourism-related expenditures exceed \$250 million per year.

Soft shell clam provide estimated income of \$4.5 million to about 270 commercial diggers (1994)

## Status Update & Next Steps

The program is focusing on the most significant problems facing the Bay today: toxic pollution, habitat disruption and loss, nutrient enrichment, and pathogen contamination.

These problems are the result of development, stormwater runoff, combined sewer overflows, failing septic systems and discharges from boats, or existing sediment contamination. Storm-water runoff is thought to be the single greatest contributor of contaminants to Casco Bay.



Casco Bay watershed. Courtesy of USEPA.

recommendations that aim to reopen clam flats in the Bay, address the combined sewer overflows of the City of Portland, and educate the public about pollution prevention from homes and boats.

For more information about the program call (207) 780-4820, write Casco Bay Estuary Project, University of Southern Maine, Room 408, Law School Building, P.O. Box 9300, Portland, ME 04104 or email at [kgroves@usm.main.edu](mailto:kgroves@usm.main.edu).



ASSOCIATION OF  
NATIONAL ESTUARY  
PROGRAMS



# Association of National Estuary Programs

The Association of National Estuary Program (ANEP) is a non-profit organization dedicated to promoting responsible stewardship and a common vision for the preservation of our nation's bays and estuaries.

## ANEP's Mission

Bring consistency to estuarine data collection and management, and turn data into useful information that is consolidated into meaningful status and trends at the national scale. Ensure that data are reliable, objective, and goal-directed. Achieve recognition of the critical roles for continued monitoring and assessment.

Educate the public on the meaning and practical application of "responsible stewardship." Ensure that the public understands the long-term nature of solutions to the environmental problems now facing bays and estuaries.

Achieve mutual support and coordination among all coastal programs. Enhance communication among NEPs and between NEPs and other coastal programs. Report both successes and failures to Congress and the American public, while understanding that through 'adaptive management' we can achieve effective management of our nation's bays and estuaries.

Seek explicit congressional support and commitment to implement Comprehensive Conservation and Management Plans (CCMPs). Capitalize on the hundreds of thousands of volunteer hours invested thus far, nationwide, and recognize the important role that Management Conferences play as a continuing forum for all stakeholders.

Achieve sufficient federal funding to strengthen the federal/state/local and public/private partnerships that have been fledged across the nation. Achieve stable funding for core program operations, project implementation, and local government pass-through dollars as incentive for regional, multi-jurisdictional cooperation.

